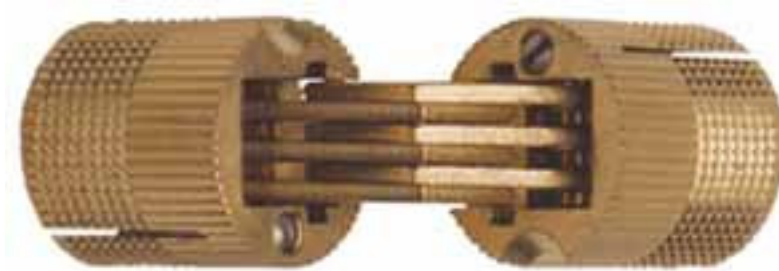


## BARREL HINGES

Also called: ZYSA hinges, SOSS hinges or EXCELLENT Hinges.



Item Code: HZYSA10 HINGE BARREL 10MM ZYSA (341.22.506) 031168  
Fasten with countersunk wood screws with a hole size of 2mm.

Item Code: HZYSA12 HINGE BARREL 12MM ZYSA (341.23.503) 031169  
Fasten with countersunk wood screws with a hole size of 2.5mm.

Item Code: HZYSA14 HINGE BARREL 14MM ZYSA (341.13.507) 031170  
Fasten with countersunk woodscrews with a hole size of 2.5mm.

Manufactured from Solid brass base material with brass links.

Can be used either left or right

Depth of hole needs to be no bigger than the length of the hinge.

Width of the hole needs to be no bigger than the width of the hinge

Opening angle is 180 degrees.

For light applications only.

Accurate drilling is essential.

Adjustable tension screw included, no other screws needed.

**PLEASE NOTE: These hinges are not recommended for vertical or load bearing applications. The manufacturer does not provide weight ratings on this product.**

Easy to install. See page 2

**Installation:** Drill holes.

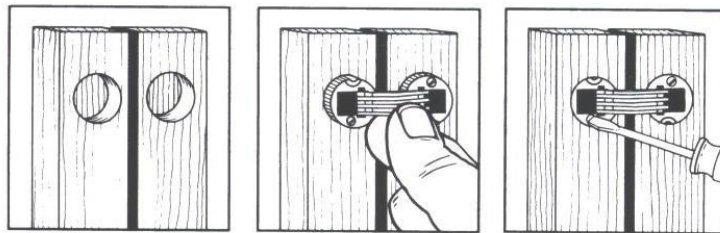
Osborne Park: 39 Howe Street.  
Bunbury: 12 Sylvan Way  
O'Connor: 11 Zeta Cres  
Wangara: U-2 6 Ismail Street  
Thebarton: 14 Murray Street  
Lonsdale: 1 Bristol Court

Ph 08 9446 6333 Fax 08 9446 8865  
Ph 08 9725 4812 Fax 08 9725 4809  
Ph 08 9331 3688 Fax 08 9331 1503  
Ph 08 9309 6333 Fax 08 9309 6899  
Ph 08 8352 1888 Fax 08 8352 1666  
Ph 08 8186 1888 Fax 08 8186 1666



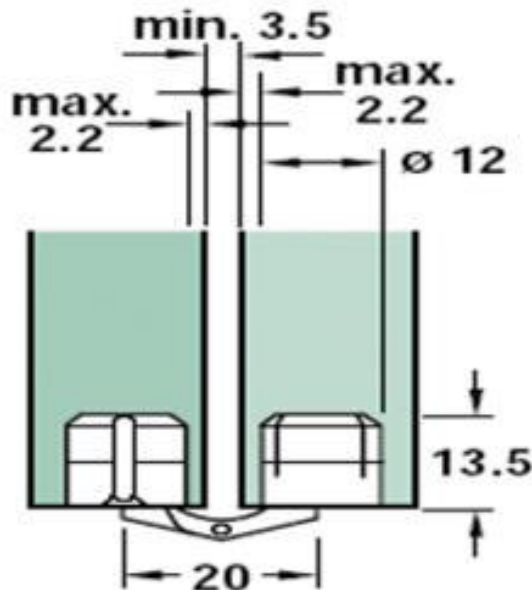
Phone 08 9446 6333 Fax 08 9446 8865 Email: [hardware@galvinhw.com.au](mailto:hardware@galvinhw.com.au) Web: [www.galvinhw.com.au](http://www.galvinhw.com.au)

Insert hinge cylinders either with or without glue.  
Fasten with expanding screws and wood screws.



Secure mounting in the wood or door panel is achieved by tightening the tension screw. To accommodate high loading, the cylinders can be additionally secured by installing a chipboard or wood screw in the groove on the exposed end.

These are install details for a 12mm hinge  
Measure accordingly for other sizes



Completely invisible from either side of the door when closed.

**NOTE: Not for load bearing applications.**

Osborne Park: 39 Howe Street.  
Bunbury: 12 Sylvan Way  
O'Connor: 11 Zeta Cres  
Wangara: U-2 6 Ismail Street  
Thebarton: 14 Murray Street  
Lonsdale: 1 Bristol Court

Ph 08 9446 6333 Fax 08 9446 8865  
Ph 08 9725 4812 Fax 08 9725 4809  
Ph 08 9331 3688 Fax 08 9331 1503  
Ph 08 9309 6333 Fax 08 9309 6899  
Ph 08 8352 1888 Fax 08 8352 1666  
Ph 08 8186 1888 Fax 08 8186 1666